

# SETHCO® PROCESS INDUSTRY PUMPS

Global Pumping Solutions for Filtration, Recirculation, and Transfer Applications



**MET-PRO**  
Global Pump Solutions

A Met-Pro Fluid Handling Technologies Business  
Combining the Resources of Dean Pump, Fybroc & Sethco

# PROVIDING FLUID HANDLING TECHNOLOGY SINCE 1972

Sethco is a leading manufacturer of horizontal and vertical corrosion resistant centrifugal pumps, with capacities to 250 GPM (57 m<sup>3</sup>/hr). Designed, engineered, and manufactured from both high strength thermoplastics and stainless steel, Sethco's products are field-proven and provide the solution to your most difficult fluid handling applications. A variety of pump configurations, ranging from off-the-shelf drum pumps, to a full range of magnetic drive centrifugal pumps, to custom engineered vertical sump pumps, makes Sethco adaptable to almost any pumping application.

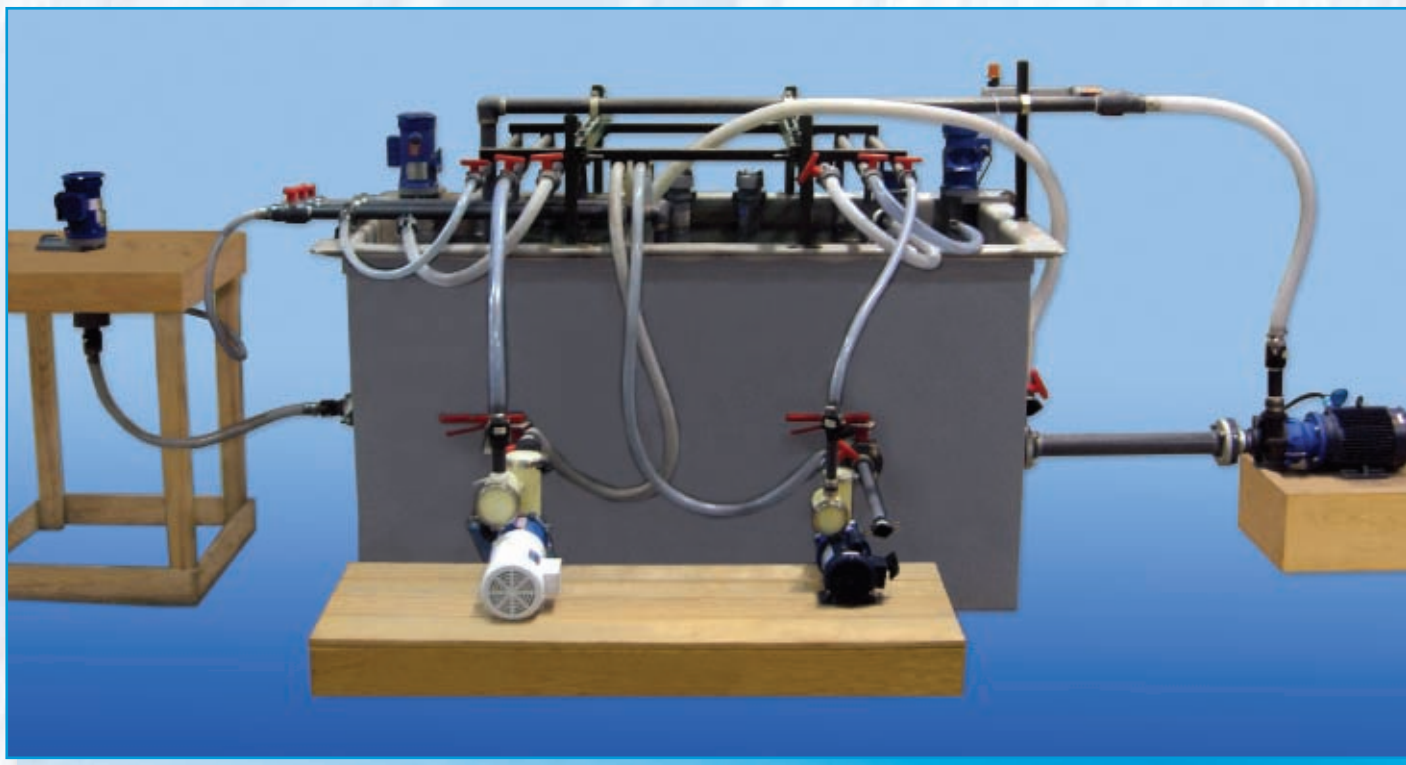
## MARKETS

- Aerospace
- Aquaculture
- Aquariums
- Automotive
- Chemical Process
- Electronics
- Laboratory
- Metal Finishing
- Municipal
- Painting
- Pharmaceutical
- Photo Processing
- Pulp and Paper
- Semiconductor

## APPLICATIONS

- Acids
- Bleaches
- Caustics
- Chemical Transfer
- Cleaning/Mixing
- Filtration
- Ideal for OEMs
- Processing
- Recirculation
- Reverse Osmosis
- Scrubber
- Seawater
- Solvents
- Wastewater

## SETHCO TEST TANK



Test tank designed for run test and evaluation of all pump assemblies prior to shipment.



# SEALLESS DRUM PUMPS

## P90 SERIES DRUM PUMPS

High powered sealless drum pumps designed to handle aggressive, corrosive, and hazardous fluids. All drum pumps are in stock and available for immediate delivery.

- Capacities to 35 GPM (135 LPM)
- Heads to 39 feet (12 m)
- Tube lengths in 10 inch (254 mm) increments from 30 inches (762 mm) to 60 inches (1524 mm)
- Explosion proof, electric or air motors suitable for 50/60 hz operation
- Polypropylene, Kynar or 316SS construction



Polypropylene Kynar 316SS

# HORIZONTAL CENTRIFUGAL PUMPS

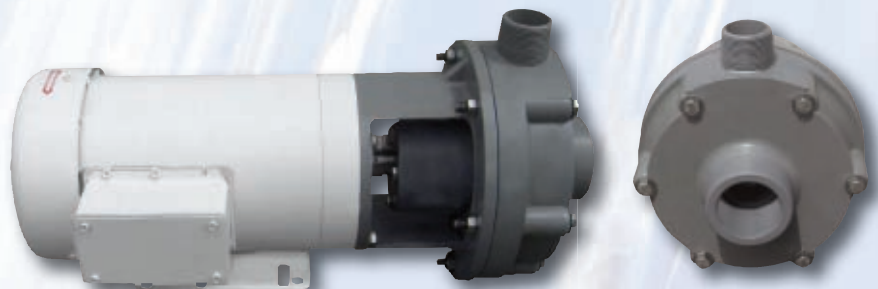
## 316 STAINLESS STEEL END SUCTION PUMPS

- Four close coupled sizes
- Capacities to 105 GPM (400 LPM)
- Heads to 72 feet (22 m)
- Motors from 1/6 to 2 hp (0.12 to 1.5 kW)
- Multiple mechanical seal options



## FORGED CPVC END SUCTION PUMPS

- Close coupled or frame mounted pumps available in two sizes
- Capacities to 240 GPM (55 m<sup>3</sup>/hr)
- Heads to 140 feet (43 m)
- Motors from 1 to 10 hp (0.75 to 7.5 kW)
- Open or closed impeller options
- Flanged inlet and outlet connections are available



# MAGNETIC DRIVE HORIZONTAL CENTRIFUGAL PUMPS

## 500 SERIES SELF-PRIMING PUMPS

- Capacities to 32 GPM (122 LPM)
- Heads to 37 feet (11 m)
- Motors from 1/4 to 1 hp (0.19 to 0.75 kW)



## 500 SERIES END SUCTION PUMPS

- Capacities to 40 GPM (152 LPM)
- Heads to 38 feet (12 m)
- Motors from 1/4 to 1 hp (1.9 to 0.75 kW)

## 1000 SERIES SELF-PRIMING PUMPS

- Capacities to 85 GPM (322 LPM)
- Heads to 75 feet (23 m)
- Motors from 1/2 to 3 hp (0.37 to 2.2 kW)



## 1000 SERIES END SUCTION PUMPS

- Capacities to 96 GPM (365 LPM)
- Heads to 78 feet (24 m)
- Motors from 1/2 to 3 hp (0.37 to 2.2 kW)

## 2500 SERIES SELF-PRIMING PUMPS

- Capacities to 225 GPM (52 m<sup>3</sup>/hr)
- Heads to 105 feet (32 m)
- Motors from 3 to 10 hp (2.2 to 7.5 kW)



## 2500 SERIES END SUCTION PUMPS

- Capacities to 250 GPM (58 m<sup>3</sup>/hr)
- Heads to 105 feet (32 m)
- Motors from 3 to 10 hp (2.2 to 7.5 kW)

**NOTE:** All magnetic drive horizontal pumps are of Polypropylene or Kynar construction for optimum corrosion resistance.



# VERTICAL CENTRIFUGAL SUMP PUMPS

## UD/UV SERIES SUMP PUMPS

- Capacities to 200 GPM (46 m<sup>3</sup>/hr)
- Heads to 145 feet (45 m)
- Lengths from 2 to 15 feet (0.6 to 4.6 m)
- Motors from 1/2 to 15 hp (0.37 to 11 kW)
- CPVC/PVC pump construction
- 316SS, Carp-20, Titanium or Hastelloy-C shafts
- Internal, external or bypass bearing lubrication
- Multiple liquid level control options



# CANTILEVER DESIGN SEALLESS PUMPS

## ZDX/ZKX SERIES IN-TANK OR OUT-OF-TANK PUMPS

- Eighteen sizes
- Capacities to 185 GPM (45 m<sup>3</sup>/hr)
- Heads to 124 feet (38 m)
- Motors from 1/20 to 7.5 hp (0.04 to 5.6 kW)
- CPVC and Kynar construction



## ZSX SERIES IN-TANK OR OUT-OF-TANK PUMPS

- Three sizes
- Capacities to 100 GPM (380 LPM)
- Heads to 68 feet (21 m)
- Motors from 3/4 to 2 hp (0.6 to 1.5 kW)
- 316SS construction



## ABOUT MET-PRO GLOBAL PUMP SOLUTIONS

Met-Pro Global Pump Solutions, which combines the resources of the Company's internationally recognized Dean®, Fybroc® and Sethco® brands, is a leading niche-oriented global provider of solutions and products for the pumping of corrosive, abrasive and high temperature liquids. Its broad range of high quality centrifugal pumps provide excellent performance for tough applications including pumping of acids, brines, caustics, bleaches, seawater, high temperature liquids and a wide variety of waste liquids for a broad range of applications including the chemical, petrochemical, metal finishing, wastewater treatment, desalination and aquarium/aquaculture markets.

## ABOUT MET-PRO

Met-Pro Corporation is a global provider of solutions and products for product recovery, pollution control and fluid handling applications. The Company's products include filtration and purification equipment for air, water and harsh, corrosive applications; fluid handling equipment for water, corrosive, abrasive, and high temperature liquids; and proprietary water treatment chemicals. For more information, visit **[www.met-pro.com](http://www.met-pro.com)**.



A Met-Pro Fluid Handling Technologies Business  
Combining the Resources of **Dean Pump**, **Fybroc** & **Sethco**

800 Emlen Way, Telford, PA 18969  
P: 800.645.0500 • F: 215.799.0920  
[info@sethco.com](mailto:info@sethco.com) • [www.sethco.com](http://www.sethco.com)

© 2010 MET-PRO CORPORATION  
SETHCO® IS A REGISTERED TRADEMARK OF MET-PRO CORPORATION 610

